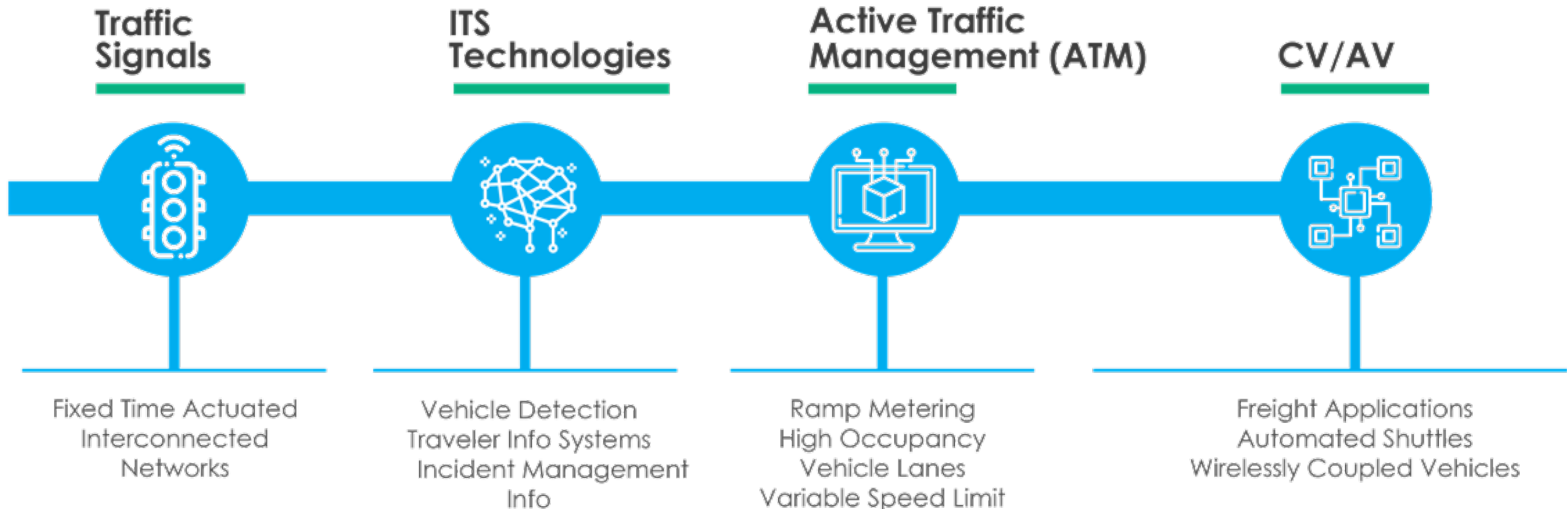




# DriveOhio

Advancing Smart Mobility

# Ohio's Transportation Technology Evolution



---

# Why Develop an IOO Strategic Road

The IOO Strategic Road map was commissioned to consolidate guidance and identify Programs that support the ability for IOOs to nationally move forward towards integrating AVs into the surface transportation ecosystem.

The development of roadmap is intended to provide better leadership nationally in the spectrum of AV technology challenges and collaboration with the AV industry.



# Program Recommendations Summary



## Physical and Digital Infrastructure Readiness

The physical and digital environments that enable or enhance AVs



## Operations

Potential AV opportunities for day-to-day DOT functions



## Interstate Freight and Multi-Modal Harmonization

Considerations for cross-state multimodal AV travel



## Partnerships

The pursuit of sustained partnerships



## Workforce

Internal and/or external skill development support



## Communications and Engagement

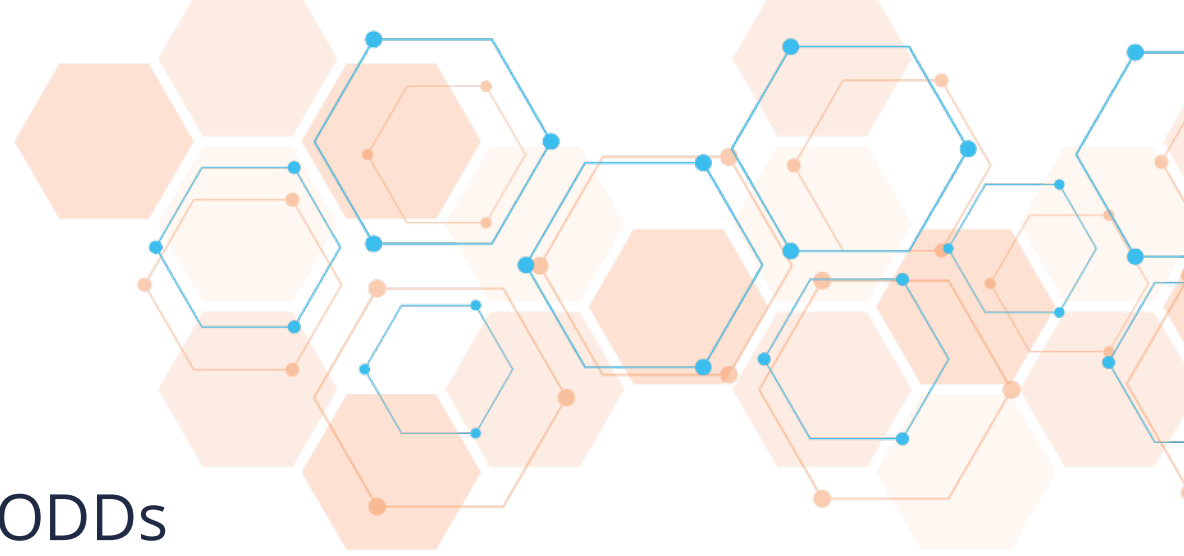
Targeted outreach and communications



## Policy

Regulations and standardization that support AV adoption

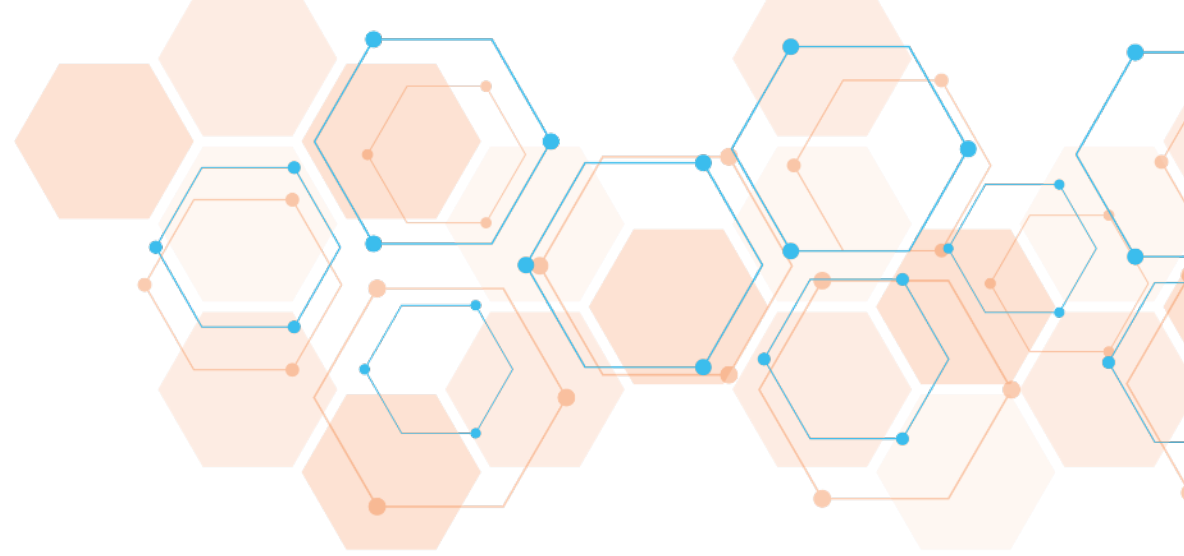
# DOT Operations



- IOOs use of AV's as ATMAAs
  - Understanding Requirements and ODDs
    - Work zones occur in all different environments
      - GPS, Lighting (Low to Full), Rain
    - Transition from Low-Speed AV Operation to High-Speed Manual Operation
    - AV Control (Remote, Manual, Automated)
      - How does the technology perform as a following vehicle at further distances around curves?
    - Retrofit vs. Purpose Built
    - Interaction with vehicles
      - How does the technology react to other construction vehicles operating in the same area?
      - What is needed from a roadway perspective for safer transition?

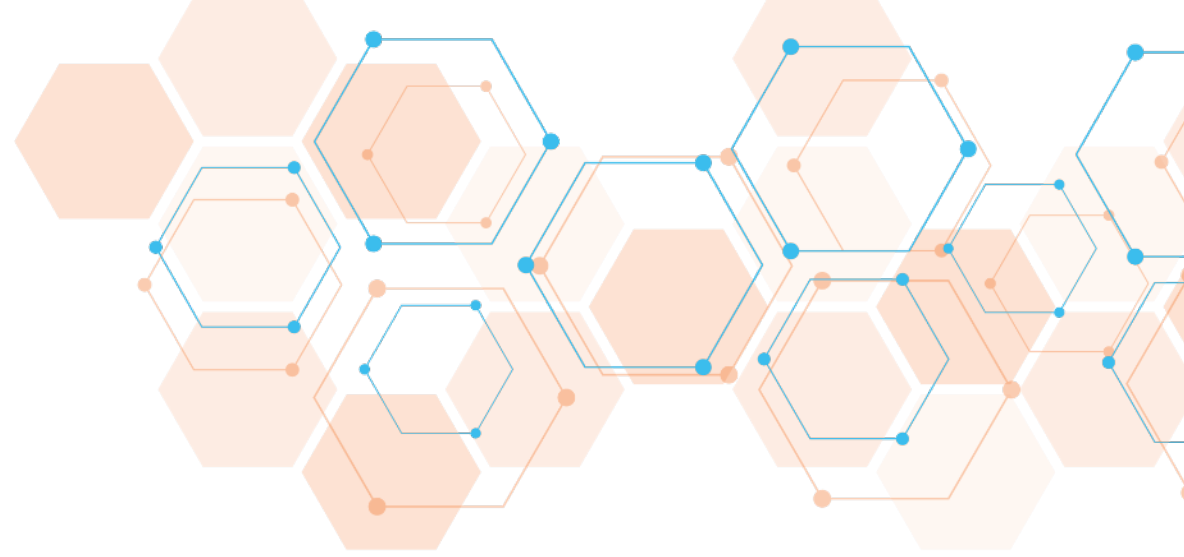
# DOT Infrastructure

- AVs traveling in work zones
  - Reduced or no shoulders
    - Use of Portable Concrete Barrier
  - Restriping of lanes
  - Reduced width lanes
    - 11 ft (~1.5 ft on each side of sedan)
  - Work zone geometrics
    - How are lane shifts performed within a road segment with 11 ft lanes?
  - Interaction with other vehicles
    - How is the lane shift performed next to an encroaching tractor-trailer?



# Collaboration

- What can IOOs do to ease the burden by the AV community of aligning technology operation with the roadway network and designs of today?



---

# Stay up to Date with the AV Industry Forum Activities:

## AccelerateAV.org

Visit today and sign up for Forum updates

Live in June 2023

Share RFPs with Industry

AV discussions between Academic, Industry and  
Government

Free for everyone to participate





Nick Hegemier  
Managing Director, Infrastructure

[nick.hegemier@drive.ohio.gov](mailto:nick.hegemier@drive.ohio.gov)

